

User's Guide

ICBC(Thai) Client Encryption

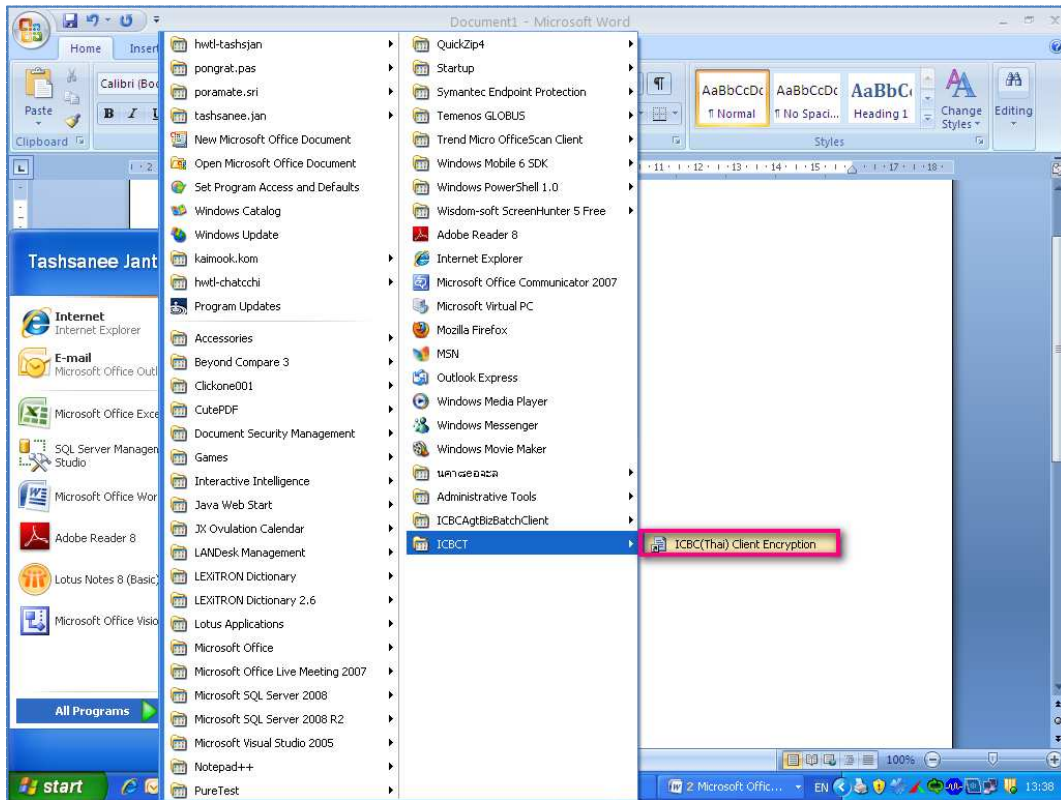
Introduction

Welcome to ICBC(Thai) Client Encryption

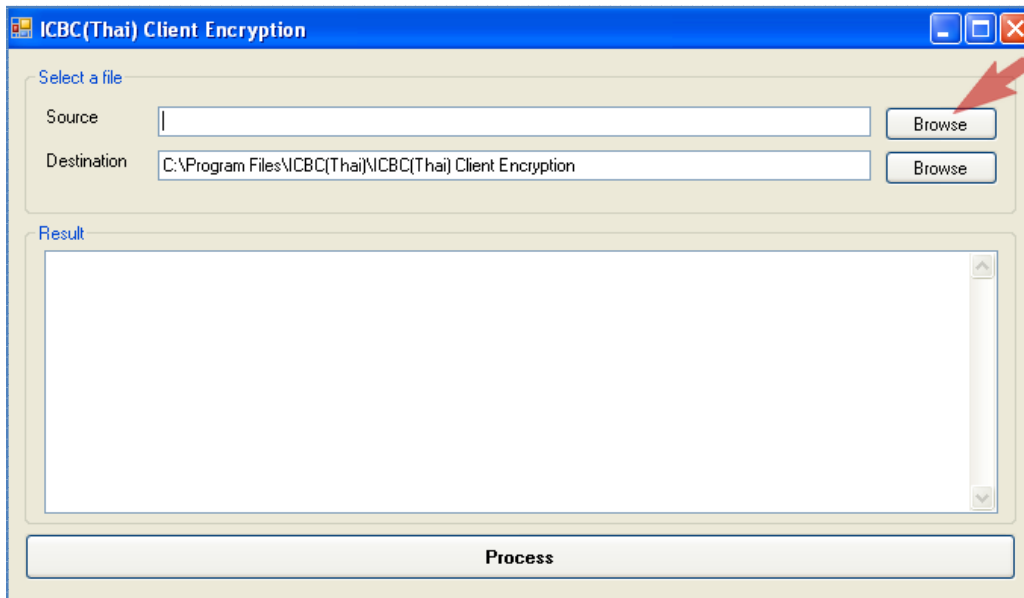
ICBC(Thai) Client Encryption is used for customer using Payroll/Direct Credit Service to encrypt the instruction file. The encryption will protect data in the file. So that unauthorized person cannot access to read the data in the file.

How to Use

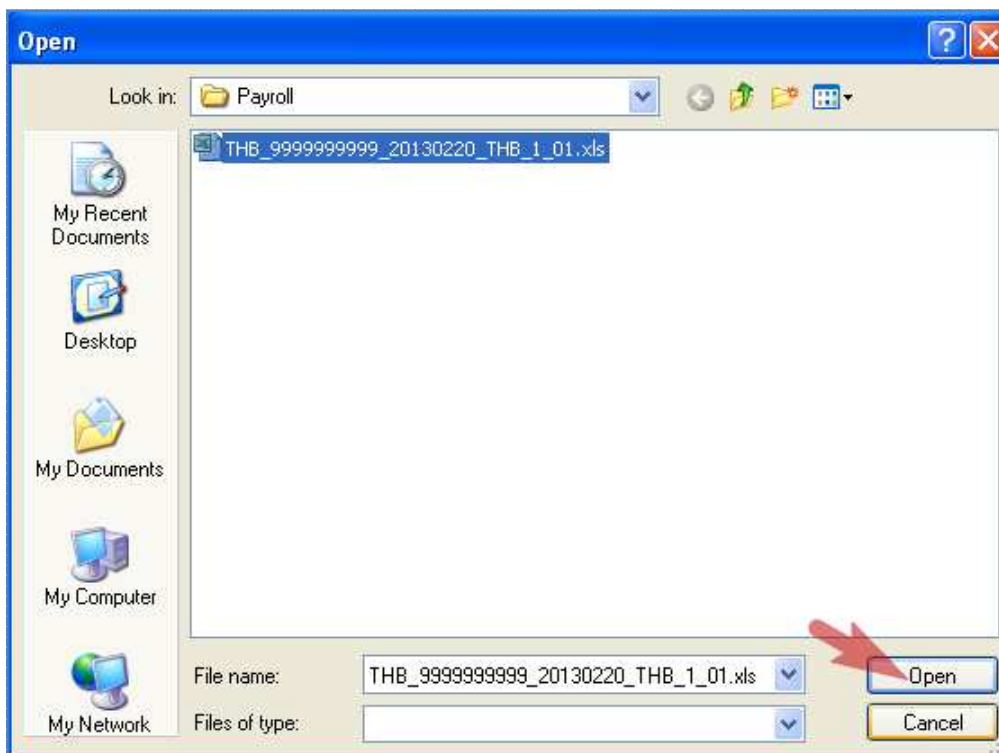
1. Go to [Start Menu > All Program > ICBCT > ICBC\(Thai\) Client Encryption](#)



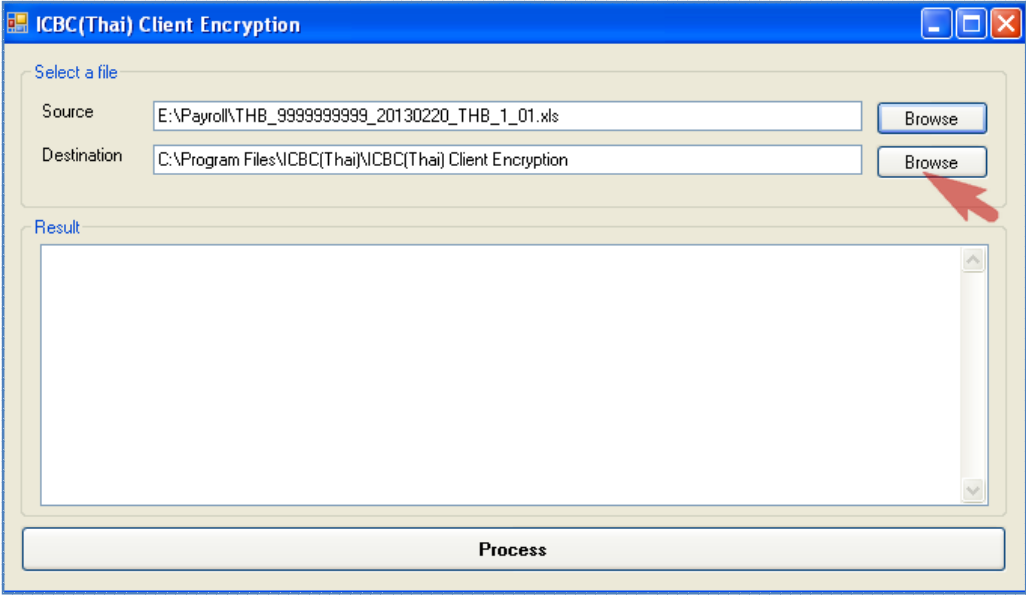
2. After clicking the Menu, **ICBC(Thai) Client Encryption** will be shown and then Click **Browse** in source area to select the instruction file as figure below



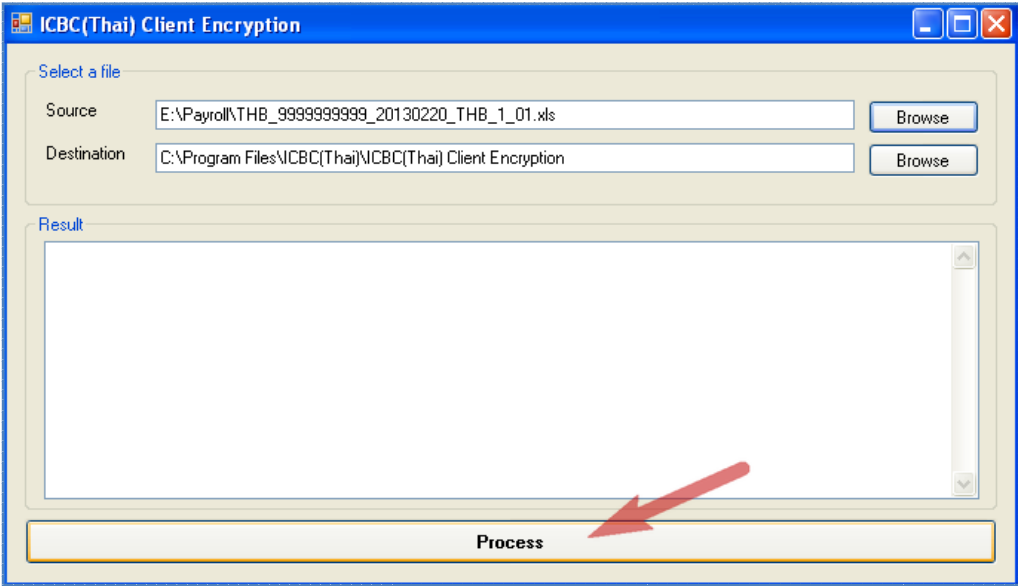
3. Click on the file which need to Encrypt, and then Click **Open** as figure below;



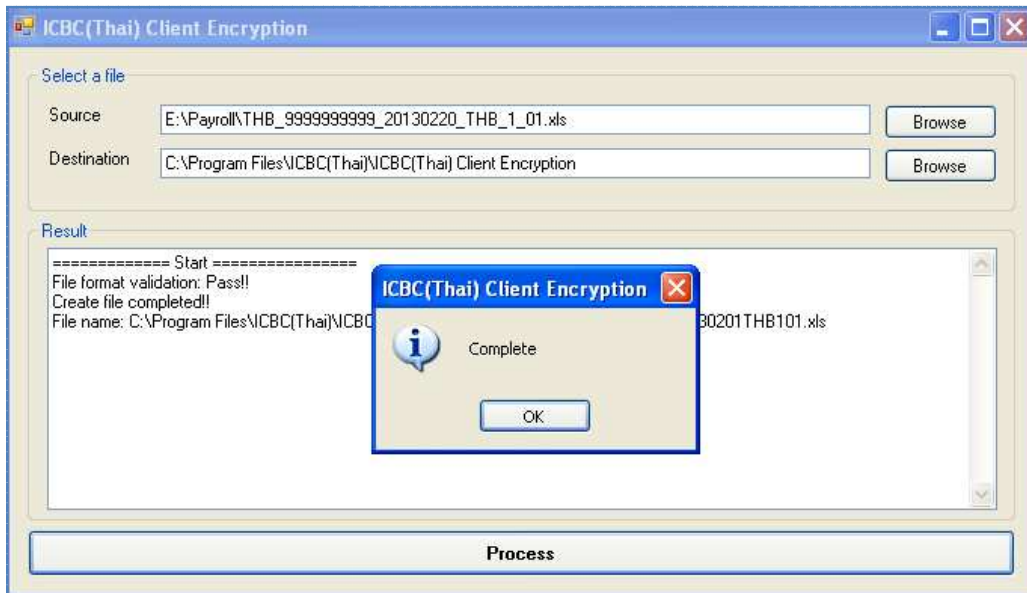
- 4. To select the Destination Path, Click **Browse** in Destination area to specify the destination path to save the file after Encryption



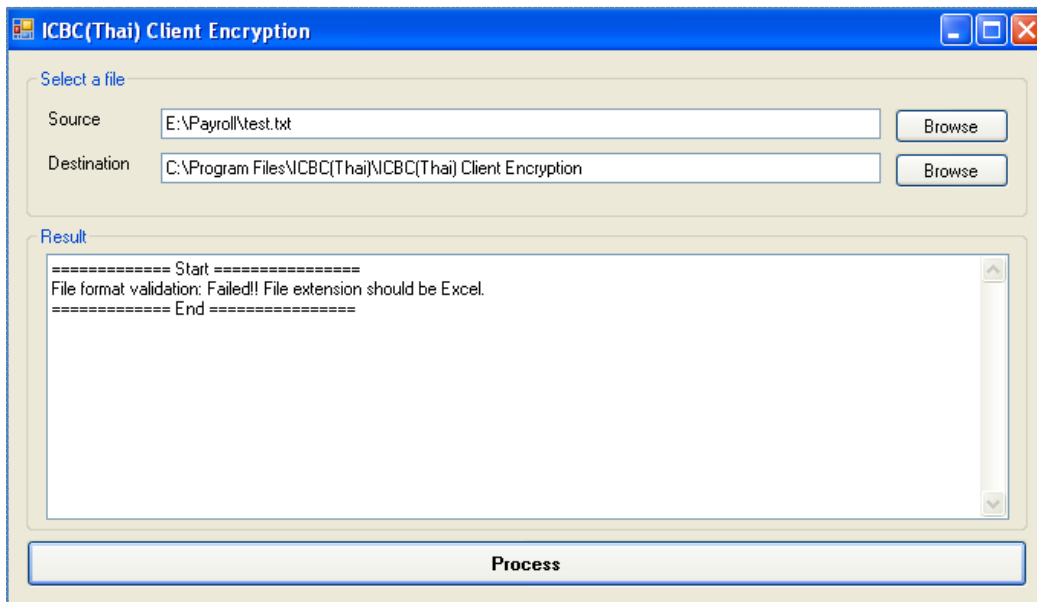
- 5. Click **Process** to start Encryption and wait until the encryption has completed



- When the encryption has completed, Dialog box will be shown "Complete" and then click **OK** to finish the encryption and encrypted file is generated as the Destination path.



- In case File is not Excel Format .xls, .xlsx , there will be shown error as figure below



- In case File Format is not correct , there will be shown error as figure below

